



**EVERYONE  
JOYFULLY  
GROWING  
IN CHRIST**

**WHO WE ARE:**



We are a community of people who have come as we are, **to connect people to Christ and together grow in His Word.**

This brochure will give you an overview of our church, the people we serve and our plans for the future. You can also learn how you can help serve others with your financial gifts.

✦ ALL STATS FROM 2018



**3rd Largest**  
Worshiping LCMS  
Congregation



**2,597**  
Members



**1,595**

Volunteers Serving Each Month



**8 Adult**  
**121 Child**  
Baptisms



**41**

Active Bible Studies  
& Small Groups

**256** **NEW**  
**Members**  
**1011 New Guests**



Each week, it takes an  
average of

**\$65,000**

to serve our  
congregation  
and community.

“Freely you have received,  
freely give”

Matthew 10:8

Certainly the church is dependent on your offering in order to function. In fact, **94%** of our income comes from your offering. But, that’s not the primary reason why we give. We give as an act of faith. **We are blessed to be a blessing.**

It’s about discovering the joy of cheerful generosity in response to God’s amazing grace. All that we have is a gift from God, and we’re created to give, not just consume. As followers of Jesus, we give freely and generously to God for the mission of his church from what God has first given us.

At Christ, we take seriously the responsibility to distribute offerings faithfully. Our financial books are open to church members, and we strive to connect people to Christ in Lincoln, the nation and the world.

## FINANCIAL OVERVIEW

---



### Ministry

211 Central / 211 South / Sanctuary / Adult Education / Caregiving / Missions



**\$1,545,913**

### Ministry Support

Administration / Facilities / Financial Generosity / Welcome Ministry



**\$1,440,129**

### Educational Support

High School Association Fee / Tuition Assistance



**\$403,658**

---

**2019 Total Proposed Budget Summary**

**\$3,389,700**

## CHRIST LINCOLN CAMPUSES

 **1,999** Combined Average Sunday Attendance All Locations



### CENTRAL

211 Worship  
Central

**972**

Sunday Average  
Attendance

**↑6.3%**

Attendance Increase  
from 2017

Sanctuary  
Worship

**743**

Sunday Average  
Attendance

**↑.97%**

Attendance Increase  
from 2017



### SOUTH

211 Worship  
South

**284**

Sunday Average  
Attendance

**↑3.3%**

Attendance Increase  
from 2017



christ lincoln  
SCHOOLS

Our Christ Lincoln Schools serve families and children, infants to Grade 5: Child Care, Preschool, Summer Program and Elementary School. **We are committed to leading children to Love Jesus, Love Others, and Love Learning.**



**271** Total Number  
of Students

**134** Elementary Students

**101** Child Care Children

**36** Preschool Children



Summer  
Program

**74** KIDS

**52** Children in Child  
Care Weekly



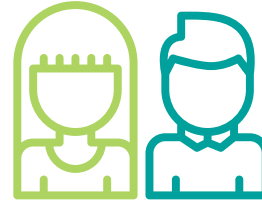
**34**

K-5 Scholarships



## FAMILY MINISTRIES

Family Ministry connects parents and children with the truth of God's Word, equips parents to engage actively in the discipleship and spiritual formation of their children, and empowers people at every stage of life to make a positive difference in the world for Christ.



# 702

**KIDS/TEENS INVOLVED**

**113** High Schoolers +

**589** Preschool to 8th Grade

### WEDNESDAY NIGHTS

 **73** High School  
**96** Middle School

 **158**

Weekly Volunteers



**VBS**

**450** / **125**  
Kids / Volunteers



**49**  
Students

Attend the 2019  
National Youth  
Gathering



## OUTREACH MINISTRIES

Our outreach efforts were made possible by the generosity of our donors and the dedication of our volunteers.

### Serve Lincoln / December 2018

 **238**  
Volunteers

 **13**  
Agencies Served

### Night to Shine / 2019

 **500+**  
Volunteers

 **81**  
Guests

## CAREGIVING MINISTRIES

As Jesus cares for all of us, we care for one another.



 Countless Caregiving Visits Each Year

### MINISTRIES AT CHRIST

Car Ministry / Griefshare Support Group  
Surviving the Holidays Seminar  
Wednesday Adult Bible Study  
Needy Family Support



## MINISTRY SUPPORT

---

Our purpose as a ministry support team is to enable our ministries by making sure we have safe facilities and the healthy strategies and processes behind major initiatives.

  
**120**  
Employees

### 2018 ACCOMPLISHMENTS

Updated Technology  
Organization Chart/New Employees

#### Facility Improvements:

New Screens Sanctuary Worship  
New Floor 211 Worship Central  
New Sound System 211 Worship Central

#### Successful Build for Christ / South:

Land costs	\$2,200,000
Construction costs	\$4,300,000
Parking / Furnishings / etc:	\$1,300,000

#### Money Raised:

Participate for Growth	
Commitments / South	\$2,800,000
Build For Christ South	\$1,860,000



## Goals for the future:

- Create easy and natural ways to connect, grow in faith, serve others and care for each other
- Growing more deeply in relationship with Christ and making prayer a way of life
- Provide a welcoming experience
- Maximize Kingdom impact through multi-site, partnership, and mentoring engaging leaders beyond our congregation
- Gather sufficient resources to carry out ministry objectives
- Achieve superior operations
- Foster a lifestyle of seeking, saving and caring for the lost



## WE NEED YOU

Each week, it takes an average of

# \$65,000

to serve our congregation and community.

Visit our website to learn more:  
[christlincoln.org/give](http://christlincoln.org/give)

### Questions about giving?

Please contact: [tgrunow@christlincoln.org](mailto:tgrunow@christlincoln.org)  
402.483.7774, ext. 107

**Thank you** so much for your support of our ministry. As you can see, all of our ministries are important in performing God's work. Each offering is a major blessing towards everything we will accomplish together.



christ lincoln

A LUTHERAN MINISTRY

[christlincoln.org](http://christlincoln.org) / 402.483.7774  
4325 Sumner St., Lincoln, NE 68506